

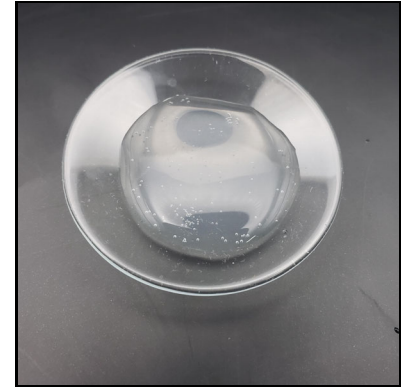
Certificate of Analysis

Client Name: Nine Mile Brewing	Matrix: Solid
Client Address: 9555 James Ave. South, #290, Bloomington, MN 55431	Date Received: 3/25/2024 12:40:00PM
Sample ID: Thrive Daylight 5.1	Lab Sample ID: 2401220-01
Lot/Batch #:	Date of Report: 4/12/2024 4:29:33PM

Analysis	Requested (Yes/No)
Cannabinoid Profile	Yes
Terpene Profile	No
Aflatoxins	Yes
Heavy Metals	Yes
Residual Solvents	Yes
Microbial Testing	Yes
Pesticides	Yes



Sample, packaged



Sample, actual

Cannabinoid Profile 2401220-01

Thrive Daylight 5.1

Analyte	Result	RL	Units	Analysis Method	Date Analyzed	Notes
Cannabichromene (CBC)	<0.000100	0.000100	% by Weight w	HPLC	3/26/24 5:22 pm	
Cannabidiol (CBD)	<0.000100	0.000100	% by Weight w	HPLC	3/26/24 5:22 pm	
Cannabidiolic Acid (CBDA)	<0.000100	0.000100	% by Weight w	HPLC	3/26/24 5:22 pm	
Cannabigerol (CBG)	0.000493	0.000100	% by Weight w	HPLC	3/26/24 5:22 pm	
Cannabigerolic Acid (CBGA)	<0.000100	0.000100	% by Weight w	HPLC	3/26/24 5:22 pm	
Cannabinol (CBN)	<0.000100	0.000100	% by Weight w	HPLC	3/26/24 5:22 pm	
Delta-8-Tetrahydrocannabinol (d8-THC)	<0.000500	0.000500	% by Weight w	HPLC	3/26/24 5:22 pm	
Delta-9-Tetrahydrocannabinol (d9-THC)	0.000887	0.000100	% by Weight w	HPLC	3/26/24 5:22 pm	
THCA-A	<0.000100	0.000100	% by Weight w	HPLC	3/26/24 5:22 pm	
Total CBG	0.000493	0.000188	% by Weight w	HPLC	3/26/24 5:22 pm	
Total CBD	<0.000188	0.000188	% by Weight w	HPLC	3/26/24 5:22 pm	
Total THC	0.000887	0.000188	% by Weight w	HPLC	3/26/24 5:22 pm	

Aflatoxins 2401220-01

Thrive Daylight 5.1

Analyte	Result	RL	Units	Analysis Method	Date Analyzed	Notes
Aflatoxin G2	<5.3	5.3	ng/g	LC-MS/MS	4/9/24 9:25 pm	
Aflatoxin G1	<2.6	2.6	ng/g	LC-MS/MS	4/9/24 9:25 pm	
Aflatoxin B2	<2.6	2.6	ng/g	LC-MS/MS	4/9/24 9:25 pm	
Aflatoxin B1	<2.6	2.6	ng/g	LC-MS/MS	4/9/24 9:25 pm	

Taylor Schertler

Taylor Schertler - Administrative Manager Investigative Chem

Certificate of Analysis

Heavy Metals

2401220-01

Thrive Daylight 5.1

Analyte	Result	RL	Units	Analysis Method	Date Analyzed	Notes
Arsenic	<250	250	ug/kg wet	EPA 6020B	4/2/24 4:12 pm	
Cadmium	<100	100	ug/kg wet	EPA 6020B	4/2/24 4:12 pm	
Mercury	<100	100	ug/kg wet	EPA 6020B	4/2/24 4:12 pm	
Lead	<130	130	ug/kg wet	EPA 6020B	4/2/24 4:12 pm	

Residual Solvents

2401220-01

Thrive Daylight 5.1

Analyte	Result	RL	Units	Analysis Method	Date Analyzed	Notes
Ethanol	<0.052	0.052	% by Weight	EPA 8015D	4/8/24 4:25 pm	
n-Hexane	<0.043	0.043	% by Weight	EPA 8015D	4/8/24 4:25 pm	
n-Pentane	<0.042	0.042	% by Weight	EPA 8015D	4/8/24 4:25 pm	

Microbial Testing

2401220-01

Thrive Daylight 5.1

Analyte	Result	RL	Units	Analysis Method	Date Analyzed	Notes
Salmonella	<1.0	1.0	CFU/g	AOAC 2014.01	4/4/24 10:51 am	
Total Aerobic Bacteria	<120	120	CFU/g	AOAC 990.12	4/4/24 2:17 pm	
Total Bile Tolerant Gram-Negative Bac	<75	75	CFU/g	AOAC 2003.01	4/3/24 2:08 pm	
Total Coliform	<5.0	5.0	CFU/g	AOAC 991.14	4/3/24 2:06 pm	
Total Yeast and Mold	<5.0	5.0	CFU/g	AOAC 997.02	4/5/24 8:16 am	
Total E.coli	<5.0	5.0	CFU/g	AOAC 991.14	4/4/24 2:16 pm	

Certificate of Analysis

Pesticides

2401220-01

Thrive Daylight 5.1

Analyte	Result	RL	Units	Analysis Method	Date Analyzed	Notes
Acetamiprid	<0.16	0.16	ug/g	LC-MS/MS	4/5/24 9:22 pm	
Aldicarb	<0.16	0.16	ug/g	LC-MS/MS	4/5/24 9:22 pm	
Azoxystrobin	<0.16	0.16	ug/g	LC-MS/MS	4/5/24 9:22 pm	
Bifenazate	<0.16	0.16	ug/g	LC-MS/MS	4/5/24 9:22 pm	
Bifenthrin	<0.16	0.16	ug/g	LC-MS/MS	4/5/24 9:22 pm	
Boscalid	<0.16	0.16	ug/g	LC-MS/MS	4/5/24 9:22 pm	
Carbaryl	<0.16	0.16	ug/g	LC-MS/MS	4/5/24 9:22 pm	
Carbofuran (Furadan)	<0.16	0.16	ug/g	LC-MS/MS	4/5/24 9:22 pm	
Chlorantranilprole	<0.16	0.16	ug/g	LC-MS/MS	4/5/24 9:22 pm	
Clofentezine	<0.16	0.16	ug/g	LC-MS/MS	4/5/24 9:22 pm	
Cypermethrin	<0.16	0.16	ug/g	LC-MS/MS	4/5/24 9:22 pm	
Diazinon	<0.16	0.16	ug/g	LC-MS/MS	4/5/24 9:22 pm	
Dichlorvos	<0.16	0.16	ug/g	LC-MS/MS	4/5/24 9:22 pm	
Dimethoate	<0.020	0.020	ug/g	LC-MS/MS	4/5/24 9:22 pm	
Dursban	<0.16	0.16	ug/g	LC-MS/MS	4/5/24 9:22 pm	
Ethoprophos	<0.16	0.16	ug/g	LC-MS/MS	4/5/24 9:22 pm	
Etofenprox	<0.16	0.16	ug/g	LC-MS/MS	4/5/24 9:22 pm	
Etoxazole	<0.16	0.16	ug/g	LC-MS/MS	4/5/24 9:22 pm	
Fenoxycarb	<0.16	0.16	ug/g	LC-MS/MS	4/5/24 9:22 pm	
Fenpyroximate	<0.16	0.16	ug/g	LC-MS/MS	4/5/24 9:22 pm	
Flonicamid	<0.16	0.16	ug/g	LC-MS/MS	4/5/24 9:22 pm	
Imazalil	<0.16	0.16	ug/g	LC-MS/MS	4/5/24 9:22 pm	
Imidacloprid	<0.16	0.16	ug/g	LC-MS/MS	4/5/24 9:22 pm	
Kresoxim methyl	<0.16	0.16	ug/g	LC-MS/MS	4/5/24 9:22 pm	
Malathion	<0.16	0.16	ug/g	LC-MS/MS	4/5/24 9:22 pm	
Metalaxyl	<0.16	0.16	ug/g	LC-MS/MS	4/5/24 9:22 pm	
Methiocarb	<0.16	0.16	ug/g	LC-MS/MS	4/5/24 9:22 pm	
Methomyl	<0.16	0.16	ug/g	LC-MS/MS	4/5/24 9:22 pm	
Myclobutanil	<0.16	0.16	ug/g	LC-MS/MS	4/5/24 9:22 pm	
Naled	<0.16	0.16	ug/g	LC-MS/MS	4/5/24 9:22 pm	
Oxamyl	<0.16	0.16	ug/g	LC-MS/MS	4/5/24 9:22 pm	
Permethrin	<0.16	0.16	ug/g	LC-MS/MS	4/5/24 9:22 pm	
Phosmet	<0.020	0.020	ug/g	LC-MS/MS	4/5/24 9:22 pm	
Piperonyl butoxide	<0.16	0.16	ug/g	LC-MS/MS	4/5/24 9:22 pm	
Prallethrin	<0.16	0.16	ug/g	LC-MS/MS	4/5/24 9:22 pm	
Propiconazole	<0.16	0.16	ug/g	LC-MS/MS	4/5/24 9:22 pm	
Propoxur	<0.16	0.16	ug/g	LC-MS/MS	4/5/24 9:22 pm	
Pyrethrin I	<0.040	0.040	ug/g	LC-MS/MS	4/5/24 9:22 pm	
Pyrethrin II	<0.020	0.020	ug/g	LC-MS/MS	4/5/24 9:22 pm	
Pyridaben	<0.16	0.16	ug/g	LC-MS/MS	4/5/24 9:22 pm	
Spinosad	<0.16	0.16	ug/g	LC-MS/MS	4/5/24 9:22 pm	
Spiromesifen	<0.16	0.16	ug/g	LC-MS/MS	4/5/24 9:22 pm	
Spirotetramat	<0.16	0.16	ug/g	LC-MS/MS	4/5/24 9:22 pm	
Spiroxamine	<0.16	0.16	ug/g	LC-MS/MS	4/5/24 9:22 pm	
Thiacloprid	<0.16	0.16	ug/g	LC-MS/MS	4/5/24 9:22 pm	

Certificate of Analysis

Thiamethoxam	<0.16	0.16	ug/g	LC-MS/MS	4/5/24	9:22 pm
Trifloxystrobin	<0.16	0.16	ug/g	LC-MS/MS	4/5/24	9:22 pm

Sample Narrative: 2401220-01

Thrive Daylight 5.1

2401220-01, 'Thrive Daylight 5.1'. 4.3mg of D9-THC per 16 ounce can.

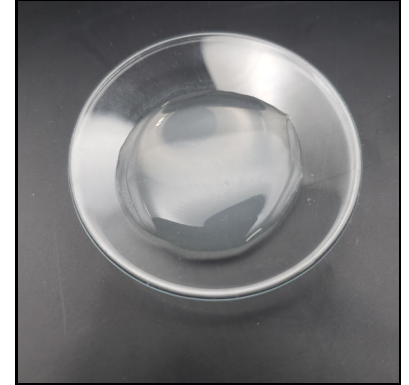
Certificate of Analysis

Client Name: Nine Mile Brewing	Matrix: Solid
Client Address: 9555 James Ave. South, #290, Bloomington, MN 55431	Date Received: 3/25/2024 12:40:00PM
Sample ID: Thrive Nightlight 5.2	Lab Sample ID: 2401220-02
Lot/Batch #:	Date of Report: 4/12/2024 4:29:33PM

Analysis	Requested (Yes/No)
Cannabinoid Profile	Yes
Terpene Profile	No
Aflatoxins	Yes
Heavy Metals	Yes
Residual Solvents	Yes
Microbial Testing	Yes
Pesticides	Yes



Sample, packaged



Sample, actual

Cannabinoid Profile 2401220-02

Thrive Nightlight 5.2

Analyte	Result	RL	Units	Analysis Method	Date Analyzed	Notes
Cannabichromene (CBC)	<0.000100	0.000100	% by Weight w	HPLC	3/26/24 6:02 pm	
Cannabidiol (CBD)	0.000723	0.000100	% by Weight w	HPLC	3/26/24 6:02 pm	
Cannabidiolic Acid (CBDA)	<0.000100	0.000100	% by Weight w	HPLC	3/26/24 6:02 pm	
Cannabigerol (CBG)	<0.000100	0.000100	% by Weight w	HPLC	3/26/24 6:02 pm	
Cannabigerolic Acid (CBGA)	<0.000100	0.000100	% by Weight w	HPLC	3/26/24 6:02 pm	
Cannabinol (CBN)	0.000531	0.000100	% by Weight w	HPLC	3/26/24 6:02 pm	
Delta-8-Tetrahydrocannabinol (d8-THC)	<0.000500	0.000500	% by Weight w	HPLC	3/26/24 6:02 pm	
Delta-9-Tetrahydrocannabinol (d9-THC)	0.00180	0.000100	% by Weight w	HPLC	3/26/24 6:02 pm	
THCA-A	<0.000100	0.000100	% by Weight w	HPLC	3/26/24 6:02 pm	
Total CBG	<0.000188	0.000188	% by Weight w	HPLC	3/26/24 6:02 pm	
Total CBD	0.000723	0.000188	% by Weight w	HPLC	3/26/24 6:02 pm	
Total THC	0.00180	0.000188	% by Weight w	HPLC	3/26/24 6:02 pm	

Aflatoxins 2401220-02

Thrive Nightlight 5.2

Analyte	Result	RL	Units	Analysis Method	Date Analyzed	Notes
Aflatoxin G2	<5.6	5.6	ng/g	LC-MS/MS	4/9/24 9:36 pm	
Aflatoxin G1	<2.8	2.8	ng/g	LC-MS/MS	4/9/24 9:36 pm	
Aflatoxin B2	<2.8	2.8	ng/g	LC-MS/MS	4/9/24 9:36 pm	
Aflatoxin B1	<2.8	2.8	ng/g	LC-MS/MS	4/9/24 9:36 pm	

Certificate of Analysis

Heavy Metals

2401220-02

Thrive Nightlight 5.2

Analyte	Result	RL	Units	Analysis Method	Date Analyzed	Notes
Arsenic	<250	250	ug/kg wet	EPA 6020B	4/2/24 4:25 pm	
Cadmium	<100	100	ug/kg wet	EPA 6020B	4/2/24 4:25 pm	
Mercury	<100	100	ug/kg wet	EPA 6020B	4/2/24 4:25 pm	
Lead	<130	130	ug/kg wet	EPA 6020B	4/2/24 4:25 pm	

Residual Solvents

2401220-02

Thrive Nightlight 5.2

Analyte	Result	RL	Units	Analysis Method	Date Analyzed	Notes
Ethanol	<0.039	0.039	% by Weight	EPA 8015D	4/8/24 4:53 pm	
n-Hexane	<0.032	0.032	% by Weight	EPA 8015D	4/8/24 4:53 pm	
n-Pentane	<0.031	0.031	% by Weight	EPA 8015D	4/8/24 4:53 pm	

Microbial Testing

2401220-02

Thrive Nightlight 5.2

Analyte	Result	RL	Units	Analysis Method	Date Analyzed	Notes
Salmonella	<1.0	1.0	CFU/g	AOAC 2014.01	4/4/24 10:51 am	
Total Aerobic Bacteria	<120	120	CFU/g	AOAC 990.12	4/4/24 2:17 pm	
Total Bile Tolerant Gram-Negative Bac	<75	75	CFU/g	AOAC 2003.01	4/3/24 2:08 pm	
Total Coliform	<5.0	5.0	CFU/g	AOAC 991.14	4/3/24 2:06 pm	
Total Yeast and Mold	<5.0	5.0	CFU/g	AOAC 997.02	4/5/24 8:16 am	
Total E.coli	<5.0	5.0	CFU/g	AOAC 991.14	4/4/24 2:16 pm	

Certificate of Analysis

Pesticides

2401220-02

Thrive Nightlight 5.2

Analyte	Result	RL	Units	Analysis Method	Date Analyzed	Notes
Acetamiprid	<0.15	0.15	ug/g	LC-MS/MS	4/5/24 9:40 pm	
Aldicarb	<0.15	0.15	ug/g	LC-MS/MS	4/5/24 9:40 pm	
Azoxystrobin	<0.15	0.15	ug/g	LC-MS/MS	4/5/24 9:40 pm	
Bifenazate	<0.15	0.15	ug/g	LC-MS/MS	4/5/24 9:40 pm	
Bifenthrin	<0.15	0.15	ug/g	LC-MS/MS	4/5/24 9:40 pm	
Boscalid	<0.15	0.15	ug/g	LC-MS/MS	4/5/24 9:40 pm	
Carbaryl	<0.15	0.15	ug/g	LC-MS/MS	4/5/24 9:40 pm	
Carbofuran (Furadan)	<0.15	0.15	ug/g	LC-MS/MS	4/5/24 9:40 pm	
Chlorantranilprole	<0.15	0.15	ug/g	LC-MS/MS	4/5/24 9:40 pm	
Clofentezine	<0.15	0.15	ug/g	LC-MS/MS	4/5/24 9:40 pm	
Cypermethrin	<0.15	0.15	ug/g	LC-MS/MS	4/5/24 9:40 pm	
Diazinon	<0.15	0.15	ug/g	LC-MS/MS	4/5/24 9:40 pm	
Dichlorvos	<0.15	0.15	ug/g	LC-MS/MS	4/5/24 9:40 pm	
Dimethoate	<0.019	0.019	ug/g	LC-MS/MS	4/5/24 9:40 pm	
Dursban	<0.15	0.15	ug/g	LC-MS/MS	4/5/24 9:40 pm	
Ethoprophos	<0.15	0.15	ug/g	LC-MS/MS	4/5/24 9:40 pm	
Etofenprox	<0.15	0.15	ug/g	LC-MS/MS	4/5/24 9:40 pm	
Etoxazole	<0.15	0.15	ug/g	LC-MS/MS	4/5/24 9:40 pm	
Fenoxycarb	<0.15	0.15	ug/g	LC-MS/MS	4/5/24 9:40 pm	
Fenpyroximate	<0.15	0.15	ug/g	LC-MS/MS	4/5/24 9:40 pm	
Flonicamid	<0.15	0.15	ug/g	LC-MS/MS	4/5/24 9:40 pm	
Imazalil	<0.15	0.15	ug/g	LC-MS/MS	4/5/24 9:40 pm	
Imidacloprid	<0.15	0.15	ug/g	LC-MS/MS	4/5/24 9:40 pm	
Kresoxim methyl	<0.15	0.15	ug/g	LC-MS/MS	4/5/24 9:40 pm	
Malathion	<0.15	0.15	ug/g	LC-MS/MS	4/5/24 9:40 pm	
Metalaxyl	<0.15	0.15	ug/g	LC-MS/MS	4/5/24 9:40 pm	
Methiocarb	<0.15	0.15	ug/g	LC-MS/MS	4/5/24 9:40 pm	
Methomyl	<0.15	0.15	ug/g	LC-MS/MS	4/5/24 9:40 pm	
Myclobutanil	<0.15	0.15	ug/g	LC-MS/MS	4/5/24 9:40 pm	
Naled	<0.15	0.15	ug/g	LC-MS/MS	4/5/24 9:40 pm	
Oxamyl	<0.15	0.15	ug/g	LC-MS/MS	4/5/24 9:40 pm	
Permethrin	<0.15	0.15	ug/g	LC-MS/MS	4/5/24 9:40 pm	
Phosmet	<0.019	0.019	ug/g	LC-MS/MS	4/5/24 9:40 pm	
Piperonyl butoxide	<0.15	0.15	ug/g	LC-MS/MS	4/5/24 9:40 pm	
Prallethrin	<0.15	0.15	ug/g	LC-MS/MS	4/5/24 9:40 pm	
Propiconazole	<0.15	0.15	ug/g	LC-MS/MS	4/5/24 9:40 pm	
Propoxur	<0.15	0.15	ug/g	LC-MS/MS	4/5/24 9:40 pm	
Pyrethrin I	<0.038	0.038	ug/g	LC-MS/MS	4/5/24 9:40 pm	
Pyrethrin II	<0.019	0.019	ug/g	LC-MS/MS	4/5/24 9:40 pm	
Pyridaben	<0.15	0.15	ug/g	LC-MS/MS	4/5/24 9:40 pm	
Spinosad	<0.15	0.15	ug/g	LC-MS/MS	4/5/24 9:40 pm	
Spiromesifen	<0.15	0.15	ug/g	LC-MS/MS	4/5/24 9:40 pm	
Spirotetramat	<0.15	0.15	ug/g	LC-MS/MS	4/5/24 9:40 pm	
Spiroxamine	<0.15	0.15	ug/g	LC-MS/MS	4/5/24 9:40 pm	
Thiacloprid	<0.15	0.15	ug/g	LC-MS/MS	4/5/24 9:40 pm	

Certificate of Analysis

Thiamethoxam	<0.15	0.15	ug/g	LC-MS/MS	4/5/24	9:40 pm
Trifloxystrobin	<0.15	0.15	ug/g	LC-MS/MS	4/5/24	9:40 pm

Sample Narrative: **2401220-02**

Thrive Nightlight 5.2

2401220-02, 'Thrive Nightlight 5.2'. 8.6mg of D9-THC, 3.4mg of CBD, and 2.5mg of CBN per 16 ounce can.

Certificate of Analysis

Notes and Definitions

CFU/g	Colony Forming Units per Gram
HPLC	High-Performance Liquid Chromatography
MS	Mass Spectrometry
<	Less than value listed
RL	Reporting Limit
NA	Not Applicable